



**Bimbadeen**  
Phillip Island



# BULL SEMEN SALE

Bimbadeen PI have released semen from new Sires that have never been available before!

10 of the Sires have been Brangus bundle DNA tested enabling all progeny to be Registered

Once SOLD these Genetics will never be available again!

# Hondos 95928

Bimbadeen Hondos 95928 was bred from CCR HONDO 155A, a CCR Pathfinder son.

His breeding goes back to Exacto of Brinks and M/s Choya 942 - 1558. Bimbadeen Brangus purchased the entire shipment of Hondo 155A semen which was divided up between members of the "Brangus Performance Group" to breed better performance and carcase breeders for their own herds.

Hondo 155A excelled in this regard and when the first Group Breed plan figures came out Bimbadeen Hondos 95928 had exceeded the Hondo figures. The reason for this was the combination of Hondo 155A and Bimbadeen Kings Ms 92393, a daughter of Bimbadeen King 819, "The Sydney Royal Show Champion Brangus Bull" who was bred from RBR Mr King 44T4 and on the dams side went back to "Monville", "Glen Isla", "Haseley" and "Bimbadeen Lindy 21" blood lines.

	Gestation length (days)	Birth weight (kg)	200day weight (kg)	400-day weight (kg)	600-day weight (kg)	Mat cow weight (kg)	Milk (kg)	Scrotal size (cm)	Carcase weight (kg)	Eye muscle area (sq. cm)	Rib fat (mm)	Rump fat (mm)	Retail beef yield (%)	IMF (%)
EBV	+0.8	+4.6	+23	+35	+45	+36	+1	+0.7	+19	+2.0	-0.6	-0.7	+1.3	-0.4
ACC	59%	87%	84%	81%	80%	70%	73%	58%	71%	49%	60%	60%	52%	49%

SEX	Male
COLOUR	Black
BIRTH DATE	24/01/1995
CALVING YEAR	1995
AI APPROVED	Yes
PERCENT ANGUS	61.60
PERCENT BRAHMAN	38.40
GENERATIONS BRANGUS	2
HORN	Polled
SIRE	CCR HONDO 155A (P)
DAM	BIMBADEEN KINGS MS 92303 (P)
BREEDER	RS & A DAVIE



**IDENT:RAD95R95928**

Sire of Bimbadeen HONDOS 95928



**\$50**  
**A STRAW**

# CCR Hondo 155A (IMP USA)

Bimbadeen Hondos 95928 was bred from CCR HONDO 155A, a CCR Pathfinder son.

CCR Pathfinder 87152, the Sire of Hondo 155A, was 2002-2003 IBBA (USA) Show bull of the year and sire of 2006-2007 Show Heifer of the year. He ranked in the top 10% weaning weight and top 15% yearling weight.

Pathfinder was the number 1 AI Sire of the breed and IBBA Sire of the year on 3 occasions. Hondo 155A progeny EBV figures prove his genetic quality.



IDENT:USP91R155A

	Gestation length (days)	Birth weight (kg)	200day weight (kg)	400-day weight (kg)	600-day weight (kg)	Mat cow weight (kg)	Milk (kg)	Scrotal size (cm)	Carcase weight (kg)	Eye muscle area (sq. cm)	Rib fat (mm)	Rump fat (mm)	Retail beef yield (%)	IMF (%)
EBV	+0.2	+0.9	+14	+22	+25	+5	-2	0	+16	+3.1	-1.3	-1.5	+2.3	-0.9
ACC	79%	97%	96%	95%	94%	87%	94%	86%	88%	69%	80%	80%	72%	64%



Sire.

SEX	Male
COLOUR	Black
BIRTH DATE	21/02/1991
CALVING YEAR	1991
AI APPROVED	Yes
PERCENT ANGUS	62.62
PERCENT BRAHMAN	37.38
GENERATIONS BRANGUS	1
HORN	Polled
SIRE	CCR PATHFINDER 152W (P) (ET)
DAM	CCR MS CHOYA 155U6 (P)

**\$50**  
A STRAW

# Hondos 92511

Bimbadeen PI Hondos 92511 was an outstanding Sire with GT Maximum on the Sire side and CCR Hondo 155A. He has outstanding EBV, s of Gestation -1.8, Birth weight +0.5, 200 D +23, 400 D +34, 600 D + 44 and Milk + 4.

This Sire would improve the performance of most registered Brangus cattle in Australia. Not impressed, well try 1 straw in your next program and be sorry you did not try 20. Once this semen goes the Genetics will never be available again.

	Gestation length (days)	Birth weight (kg)	200day weight (kg)	400-day weight (kg)	600-day weight (kg)	Mat cow weight (kg)	Milk (kg)	Scrotal size (cm)	Carcase weight (kg)	Eye muscle area (sq.cm)	Rib fat (mm)	Rump fat (mm)	Retail beef yield (%)	IMF (%)
EBV	-1.8	+0.5	+23	+34	+44	+43	+4	+0.4	+22	-	-	-	-	-
ACC	44%	75%	66%	62%	60%	48%	45%	62%	49%	-	-	-	-	-

<b>SEX</b>	Male
<b>COLOUR</b>	Black
<b>BIRTH DATE</b>	10/01/2002
<b>CALVING YEAR</b>	2002
<b>AI APPROVED</b>	Yes
<b>PERCENT ANGUS</b>	81.75
<b>PERCENT BRAHMAN</b>	18.25
<b>HORN</b>	Polled
<b>SIRE</b>	BIMBADEEN MAXIMUM 96423
<b>DAM</b>	BIMBADEEN MS HONDO 97507
<b>BREEDER</b>	RS & A DAVIE



## \$50

### A STRAW

IDENT:RAD02E02511

# RBR King 44T4 (IMP USA)

This young bull has a lot of frame, a lot of length and a lot of balance. He is clean of sheath. He is very fertile, has good scrotal development and his semen is of excellent quality. Furthermore, he produces a lot of it.

The sire of 44/T4, DMA King, was the 1982 Triple Crown winner in the breed. He won the Grand Championship honours at the International Brangus Show in Houston, Texas, the International Futurity Show and the National Show of Merit.

The dam of 44/T4 goes back to Carson, TomTom and Maywood breeding. These three bloodlines are noted for their size and heavy muscling.

The performance stats on this bull are in the tops and he has frame and correctness to compliment. The depth of genetics in his pedigree should make him a very dependable and predictable breeder.

	Gestation length (days)	Birth weight (kg)	200day weight (kg)	400-day weight (kg)	600-day weight (kg)	Mat cow weight (kg)	Milk (kg)	Scrotal size (cm)	Carcase weight (kg)	Eye muscle area (sq.cm)	Rib fat (mm)	Rump fat (mm)	Retail beef yield (%)	IMF (%)
EBV	-0.3	+0.6	+15	+21	+31	+36	+1	+0.5	+12	+0.2	0	+0.1	+0.2	-
ACC	57%	88%	85%	83%	83%	70%	81%	63%	71%	31%	39%	39%	32%	-



IDENT:RBR85R44/T4

SEX	Male
COLOUR	Black
BIRTH DATE	11/07/1985
CALVING YEAR	1985
AI APPROVED	Yes
PERCENT ANGUS	62.63
PERCENT BRAHMAN	37.38
GENERATIONS BRANGUS	3
HORN	Polled
SIRE	DMA KING
DAM	MISS RB 47/3
BREEDER	Riley Brangus ranch

**\$30**  
**A STRAW**

# U213 RED 96239

Bred from the famous carcass sire Jillangola Red Kevin U213 from Bimbadeen Jane RAD92E92310 from the Bimbadeen Brutus and GLC Wildcard 25U breeding.

This sire has growth and carcass quality with progeny winners in steer trials.

	Gestation length (days)	Birth weight (kg)	200day weight (kg)	400-day weight (kg)	600-day weight (kg)	Mat cow weight (kg)	Milk (kg)	Scrotal size (cm)	Carcass weight (kg)	Eye muscle area (sq. cm)	Rib fat (mm)	Rump fat (mm)	Retail beef yield (%)	IMF (%)
EBV	-0.5	-1.7	+5	+7	+7	+7	+3	-0.8	+8	+1.9	+0.2	+0.3	+0.7	-
ACC	42%	80%	68%	62%	61%	43%	31%	60%	45%	31%	36%	36%	28%	-

SEX	Male
COLOUR	Red
BIRTH DATE	16/01/1996
CALVING YEAR	1996
PERCENT ANGUS	80.79
PERCENT BRAHMAN	19.21
HORN	Polled
SIRE	JILLANGOLO RED KEVIN U213
DAM	BIMBADEEN JANE 92310
BREEDER	RS & A DAVIE

IDENT:RAD96E96239



**\$10**  
A STRAW

# TUX 87382 (3/4)

Bimbadeen Tux 87382. A ¾ Black Polled Sire bred AI ET from the \$80,000 CMT TUXPEN0 308 and the Bimbadeen foundation dam Marjorie 2nd with high milk EBV,s. Tux was the only Black Poll calf in an embryo program that produced 17 live calves from 1 flush. You can see from his photos what an exceptional Sire he is. Mated over Angus = 3/8 Brangus. Mated over Hereford = Super Baldies. Use to Increase or decrease Brahman blood %age. Has always thrown polled calves and black from Angus/Brangus.



	Gestation length (days)	Birth weight (kg)	200day weight (kg)	400-day weight (kg)	600-day weight (kg)	Mat cow weight (kg)	Milk (kg)	Scrotal size (cm)	Carcase weight (kg)	Eye muscle area (sq.cm)	Rib fat (mm)	Rump fat (mm)	Retail beef yield (%)	IMF (%)
EBV	+1.0	-0.5	-3	-4	-4	-5	+6	+0.5	0	+3.0	+0.5	+0.6	+0.6	0
ACC	61%	94%	87%	86%	83%	68%	79%	57%	73%	45%	52%	56%	40%	28%

IDENT:RAD87FG0382

SEX	Male
BIRTH DATE	05/10/1987
CALVING YEAR	1987
AI APPROVED	Yes
PERCENT ANGUS	25
PERCENT BRAHMAN	75
HORN	Polled
SIRE	CMT TUXPEN0 308/0
DAM	BIMBADEEN MARJORIE 2ND
BREEDER	RS & A DAVIE



**\$25**  
A STRAW

# TUXPENNO 304

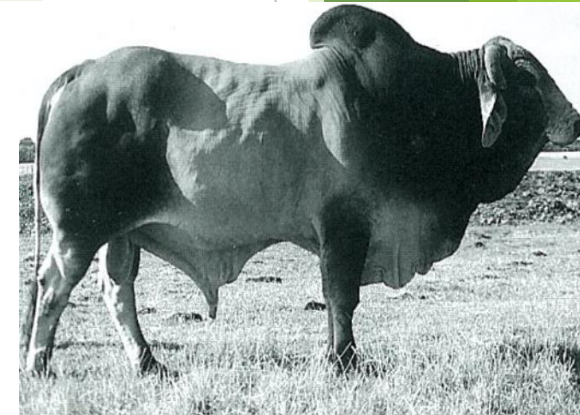
Tuxpeno 304 features excellent temperament, fertility, muscling, fleshing and conformation. He is the AI son of CMT Tuxpeno, who is among the trait leaders in Group Breeds plan, while his dam Hazelton 77/0, was bred by the Kirk family at Gayndah (QLD).

Tuxpeno has loose scurs and breeds low birth weight calves that mature to be polled. He is fawn/grey with black points.

	Gestation length (days)	Birth weight (kg)	200day weight (kg)	400-day weight (kg)	600-day weight (kg)	Mat cow weight (kg)	Milk (kg)	Scrotal size (cm)	Carcase weight (kg)	Eye muscle area (sq.cm)	Rib fat (mm)	Rump fat (mm)	Retail beef yield (%)	IMF (%)
EBV	+0.9	+0.4	+7	+11	+10	+8	+2	-0.1	+6	+0.5	-1.0	-1.1	+0.7	-
ACC	34%	53%	54%	54%	53%	47%	54%	35%	47%	26%	32%	32%	27%	-

IDENT:RAD86E304

SEX	Male
BIRTH DATE	30/30/1986
CALVING YEAR	1986
PERCENT ANGUS	0
PERCENT BRAHMAN	100
SIRE	CMT TUXPENNO 308/0
DAM	HAZELTON 77/0
BREEDER	RS & A DAVIE



**\$10**  
A STRAW



# GLC POWDERKEG (IMP USA)

Refer to the photograph of full brother Stardom. He has the same pedigree as Powderkeg.

Directly below is a photo of a Full Brother to Mistivale PowderKeg: GLC Stardom. They were both bred from the great performance sire GLC Wildcard out of the famous 3/3 cow GLC M/S Champ 3/3 whose sire was the great carcase sire DMA Champ 533. (2nd photo below) The combination of these genetics was the reason for purchasing this bull from Granada Land Corporation and importing him to Australia.

Powderkeg was purchased at the Granada Sale in Texas USA by the Grenda family and imported into Australia for use at Settlement Point Brangus at Phillip Island. He was selected as a calf on his exceptional dam GLC Ms Champ 3/3, a daughter of the great meat sire of the breed DMA Champ 533. His sire is Lovana Wild Card, one of the breed's greatest performance sires who weighted 1300 lbs at 365 days of age.



	Gestation length (days)	Birth weight (kg)	200day weight (kg)	400-day weight (kg)	600-day weight (kg)	Mat cow weight (kg)	Milk (kg)	Scrotal size (cm)	Carcase weight (kg)	Eye muscle area (sq.cm)	Rib fat (mm)	Rump fat (mm)	Retail beef yield (%)	IMF (%)
EBV	-0.8	-1.9	+1	+5	+6	+1	0	-	+5	-	-	-	-	-
ACC	36%	72%	64%	62%	57%	41%	42%	-	46%	-	-	-	-	-

IDENT:GLC88R114/X

SEX	Male
COLOUR	Black
BIRTH DATE	16/01/1988
CALVING YEAR	1988
AI APPROVED	Yes
PERCENT ANGUS	62.62
PERCENT BRAHMAN	37.38
GENERATIONS BRANGUS	1
HORN	Polled
SIRE	LOVANA WILD CARD
DAM	GLC MS CHAMP 3/3
BREEDER	Granada Brangus



Full brother.

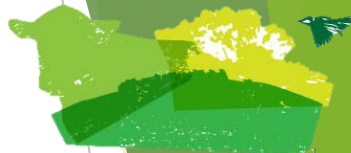
**\$25**  
A STRAW

# DOMINATOR

Dominator was one of the bulls put in to RAB Albury for collection of semen for China. He passed all tests for the strictest protocol world-wide as did the other bulls. Dominator's sire was our own Interceptor 90921 from GLC Integrity 27U and his dam was Bimbadeen Louise 91150 an RBR Mr Extra 20T3 daughter bred in our ET program. This breeding goes back to the original 1967 Louise breeding and also Bimbadeen Yuan on the sire side. Bimbadeen were very pleased to have sold Dominator to Tony and Anne Maree Elton of Elton Brangus, members of the "Brangus Performance Group" located in Central NSW.

Sired by Bimbadeen Interceptor 90921 the proven carcase sire, this young bull was one of three bull's health tested, quarantined and semen collected for China.

	Gestation length (days)	Birth weight (kg)	200day weight (kg)	400-day weight (kg)	600-day weight (kg)	Mat cow weight (kg)	Milk (kg)	Scrotal size (cm)	Carcase weight (kg)	Eye muscle area (sq.cm)	Rib fat (mm)	Rump fat (mm)	Retail beef yield (%)	IMF (%)
EBV	+1.6	+0.8	-4	+1	+4	+12	+5	+1.2	-3	-0.3	+0.7	+1.0	-0.6	+0.4
ACC	59%	89%	88%	86%	83%	72%	80%	61%	73%	42%	55%	55%	46%	42%



IDENT:RAD94R94895

SEX	Male
COLOUR	Black
BIRTH DATE	11/12/1994
CALVING YEAR	1994
AI APPROVED	Yes
PERCENT ANGUS	63.03
PERCENT BRAHMAN	36.97
GENERATIONS BRANGUS	2
HORN	Polled
SIRE	BIMBADEEN INTERCEPTOR
DAM	BIMBADEEN LOUISE 150
BREEDER	RS & A DAVIE



Sire.

**\$15**  
A STRAW

# RBR PERFECTO S56 (IMP USA)

Mr RBR Perfecto is one of the most structurally correct bulls of the Brangus breed in North America today. He has a good top line, a long loin and is long from hooks to pins. He has a deep round and displays an overall smooth muscle pattern. He has capacity in the heart girth. He is very well balanced and travels with smoothness and ease.

Perfecto's sire was DMA Champ 700. "700" was named Grand Champion bull at the International Futurity and Reserve International Grand Champion at the Houston, Texas, International Livestock Show. He was also named Grand Champion and Reserve Grand Champion at two other major shows in the U.S.

Perfecto was named Bull Calf Champion at the Tulsa, Oklahoma show and Reserve Bull Calf Champion at the National Show of Merit in Lincoln, Nebraska, in 1985.

Perfecto's Dam, Miss Cuatro B512, is one of the top producing cows at the Riley Brangus Ranch. She is very fertile, and her pedigree includes some of the breeds' top producing bloodlines.

	Gestation length (days)	Birth weight (kg)	200day weight (kg)	400-day weight (kg)	600-day weight (kg)	Mat cow weight (kg)	Milk (kg)	Scrotal size (cm)	Carcase weight (kg)	Eye muscle area (sq.cm)	Rib fat (mm)	Rump fat (mm)	Retail beef yield (%)	IMF (%)
EBV	+0.2	-1.1	+1	-3	+1	+7	+3	-0.6	-1	-0.2	-0.4	-0.5	+0.3	-
ACC	52%	88%	84%	83%	81%	68%	84%	45%	72%	27%	35%	35%	30%	-



**IDENT:RBRRD0056**

<b>SEX</b>	Male
<b>COLOUR</b>	Black
<b>BIRTH DATE</b>	03/09/1984
<b>CALVING YEAR</b>	1984
<b>AI APPROVED</b>	Yes
<b>PERCENT ANGUS</b>	62.75
<b>PERCENT BRAHMAN</b>	37.25
<b>GENERATIONS BRANGUS</b>	4
<b>HORN</b>	Polled
<b>SIRE</b>	DMA Champ 700
<b>DAM</b>	Miss Cuatro B 512
<b>BREEDER</b>	Riley Brangus Branch



**\$25**  
**A STRAW**

# ENQUIRIES

For further details and information regarding the purchase of Bimbadeen PI bull semen please do not hesitate to contact us.

**CONTACT NAME:** Bob Davie

**MOBILE:** 0409803803

**EMAIL:** [bimbadeen@nex.net.au](mailto:bimbadeen@nex.net.au)



Another 15 to 20 bulls will be added to this catalogue in the coming months at [www.bullsemen.com.au](http://www.bullsemen.com.au)

